
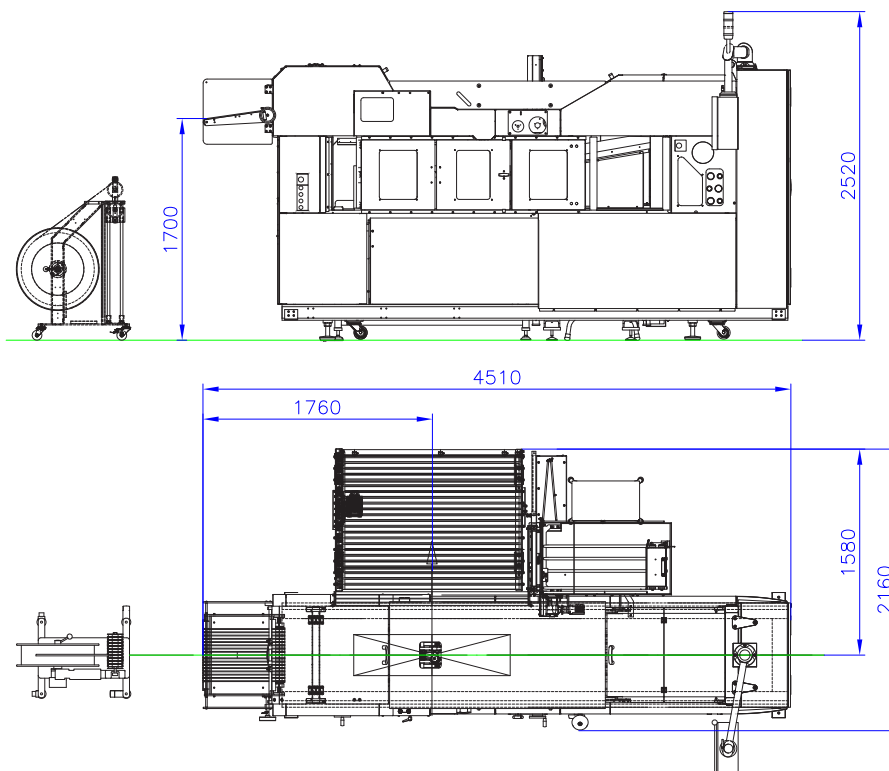


Technical Data

Product orientation:	spine leading at infeed
Cycle time:	min. 24 s (product permitting)
Product format L x W:	min. 100 x 200 mm (3,93"x7,87") max. 320 x 500 mm (12,59"x19,68")
	Shingle gap: 30-80 mm (1,18"-3,14") Shingle stream thickness: up to 30 mm (1,18")
Page count:	8 - 96 pages (@ 54 g/m ²)
Paper weight:	35 - 140 g/m ²
Log length (compressed):	800 - 1.200 mm (31,49"-47,24")
Log length (uncompressed):	max. 1.400 mm (55,11")
Infeed height:	1.700 mm (66,92")
Delivery height:	1.000 mm (39,37") (left hand or right hand delivery)
Power & Voltage:	12 kW, 3 x 400 V AC + PE 50/60 Hz (other on request)
Color:	Light grey, RAL 7035
Weight:	~ 3.000 kg (6613,86 lbs)

Changes to the technical specification are possible to a limited extent. For complete technical data, see data sheet.



The Merten Group is a stable, family-owned company that operates in three business areas: precision engineering, mechanical engineering and Postpress. We have been in the market for over 100 years and are running the business in the 5th generation.



Postpress | Service & Support | Rebuilds | Relocations | Special Solutions

HQ Austria: Fon: +43 1 2594648 | mail: mm-office@merten.at

Germany: Fon: +49 8171 404201 | mail: customerservice@gammerler.de

www.inlog-gammerler.com

High-quality logs - improve productivity in your bindery!



SH/700-IG

Log stacking

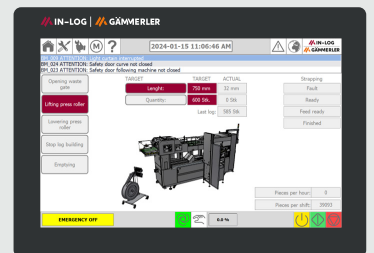


Log stacker SH/700-IG

Behind web presses with 32 pages or more, the principle of horizontal log building has proven to be advantageous. The fully automatic SH/700-IG horizontal log stacker processes the shingled stream behind the press into clean logs without any hangers. The logs are ejected onto a delivery table for palletizing. The products in the logs are evenly compressed, neatly counted and securely tied between two boards.

Unique benefits

- ▶ Performance: with a cycle time of min. 24 s (product permitting), it is ideal for use behind high-speed, high-volume web presses
- ▶ Reliability & availability: sturdy construction with high quality components
- ▶ Ergonomics: Large, high-resolution touch panel for easy setup & machine operation, self-explanatory error & help messages
- ▶ Productivity: fast & automated size changeover, job memory, intelligent interface for production management and job control. Optional connectivity to ERP-system
- ▶ Operator-friendly: transparent covers, large doors with direct access to the machine, open & safe access to the log forming area
- ▶ Robust processes: product pressing & alignment, shingle separation, board placement, etc.
- ▶ Versatility: No space problems thanks to compact design and flexible configurations



12" high-resolution HMI
with 270° swivelling commander

The new SH/700-IG log stacker is perfect for use in high-end offset and gravure printing. Whether page counts of up to 96 pages or speeds of 100,000+ cph - the SH/700-IG reliably produces good



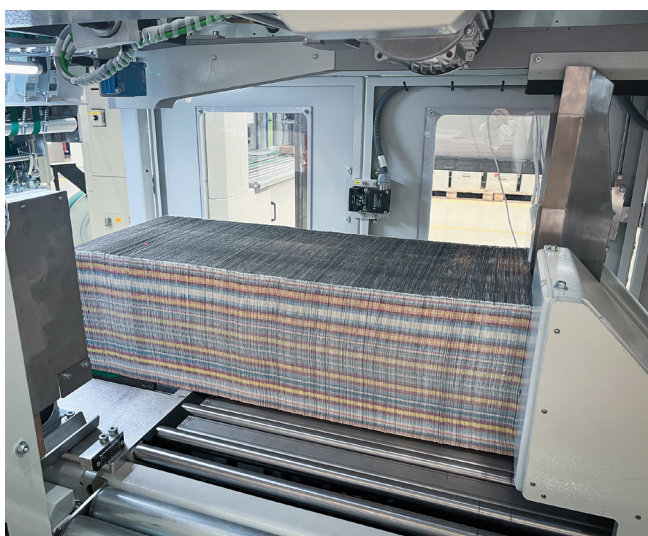
■ The log building area is the most important part of any log stacker. It determines the quality of the log and the reliability of the production process. In the SH/700-IG the log runs straight and is only gently deflected 90° downwards into the stacking area. Stacking is fully automated and controlled in real time by a closed-loop system. Servomotors ensure that the transport speed and stacking pressure are always synchronized and that good stacks are reliably formed. The signatures in the log are uniformly flat, undamaged and protected from dirt, resulting in significantly higher productivity in the bookbindery. Modern controls with a high-resolution touch screen and intelligent automation functions make the SH/700-IG a reliable machine that is easy to operate. Additional options such as log length optimization can be added.



▲ The best log quality starts at the infeed: large & adjustable squeeze rollers, long stream-aligner, special shingle separation with little built-up, reliable gap monitoring, exact product counting.



▲ Fast & reliable: An intelligent closed loop system is at the heart of the log building process. The incoming shingled stream is transformed into a uniform and straight log. Log formation is automatically adjusted in real time to product thickness and production speed.



▲ 3 clear advantages: The SH/700 IG log stacker **increases productivity in the pressroom** through reliable and automated processes. **Easier & safer storage** of compressed logs in less space compared to loose stacks. The clean and evenly compressed logs result in measurably **better performance in the bindery**.



▲ The result makes all the difference: perfect logs without hangers, protected between two end boards and neatly placed on pallets. The pallets can also be stacked. Still the best and safest way to store WIP (work in process) after printing and before handling in the bindery.